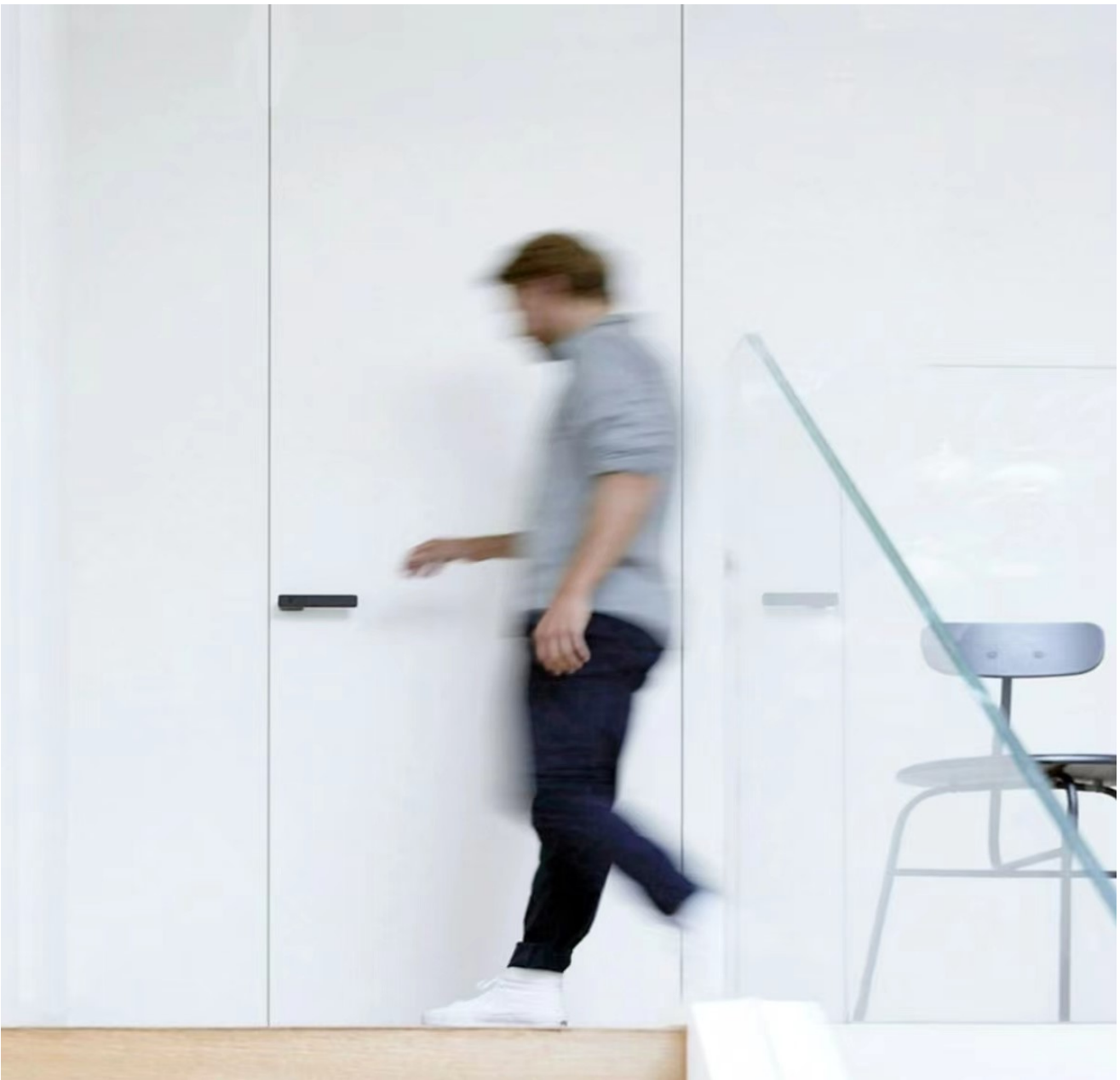




INVIS DOOR

Modern & Minimalist interior door system

FEATURE



* Modern & Clean design.

* New materials and processes.

* Excellent noise/heat resistant.

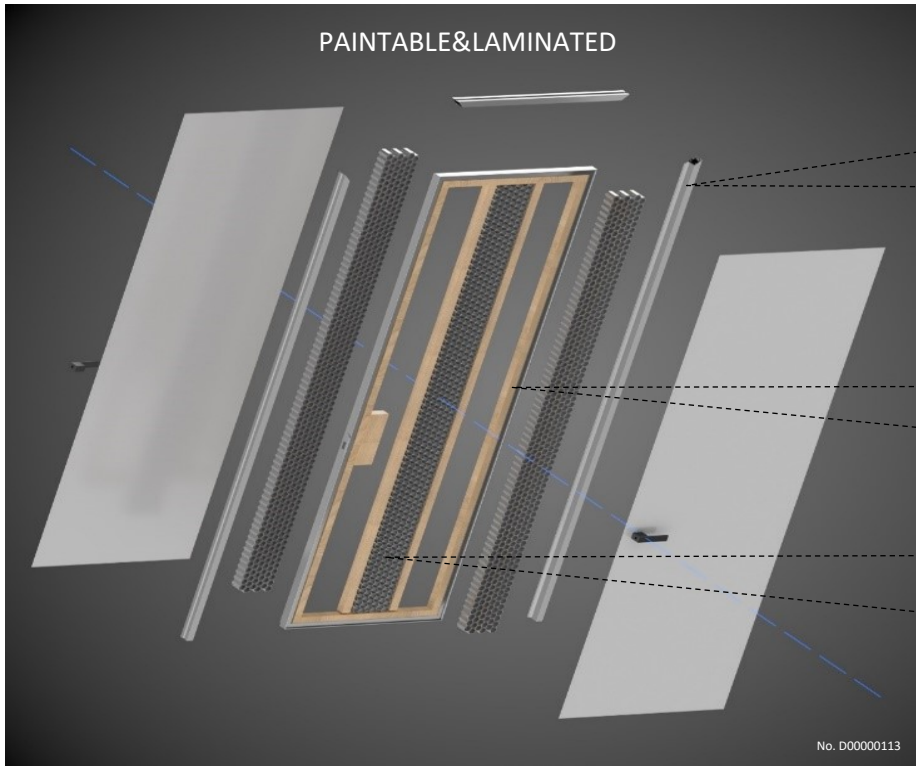
* Variety versions available.

* Pre-Hung easy installation.

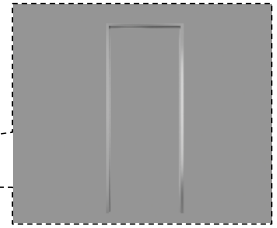
INVIS DOOR

New materials and processes.

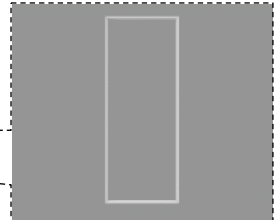
EXPLODED-VIEWS



Aluminium:
Frame



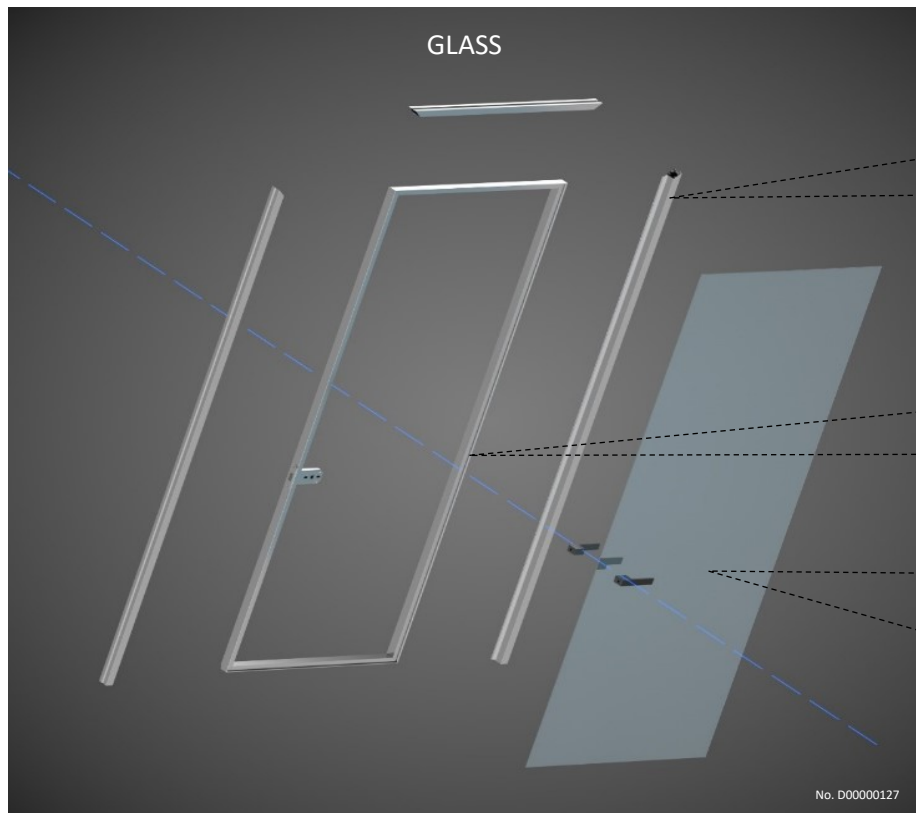
Aluminium:
Slab



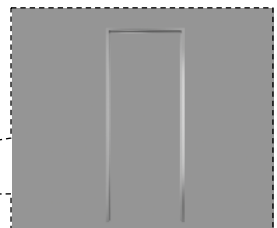
Aluminium Honeycomb Filler:



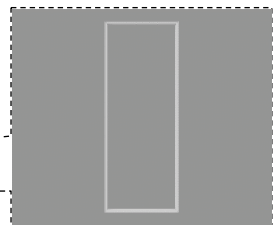
EXPLODED-VIEWS



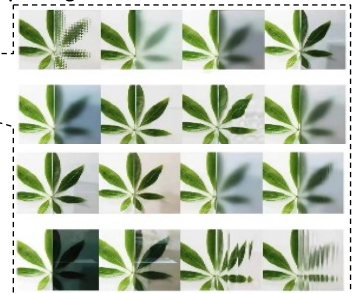
Aluminium:
Frame



Aluminium:
Slab



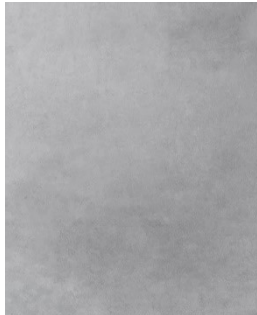
Tempered glass 8MM:



INVIS DOOR

FINISH

* PAINTABLE/LAMINATED



ETERPAN

Max size: 4*9 ft.
Putty & Paint.
DIY finish colors.



LAMINATED

Max size: 4*9 ft.
Brand: *MOGREED*
Upgrade: *DE.FOUCS/LG.Hausys/FENIX*

* GLASS

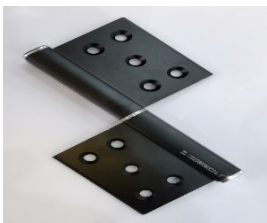


TEMPERED GLASS:

Max size: 4*9 ft.
Tempered glass: 8 MM.
Multiple choices.

STD HARDWARE

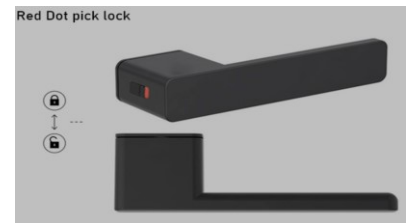
* PAINTABLE/LAMINATED



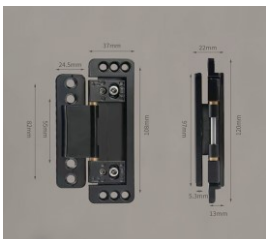
+



+



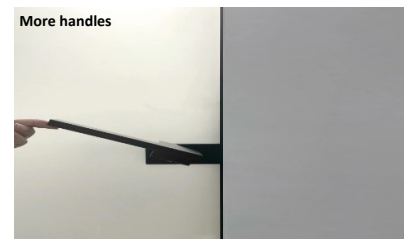
GLASS



+



+



*All standard door products price include standard hardware and have been installed and debugged before delivery.

INVIS DOOR

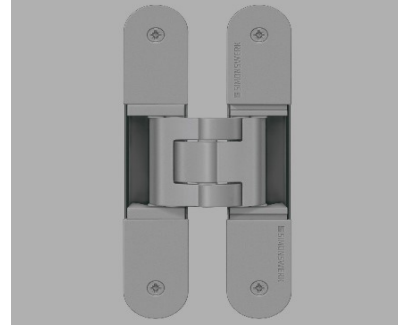
Paintable&Laminated ONLY!

UPGRADE

* HINGER UPGRADE



3D Invisible



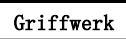
TECTUS 340 3D



* HANDLE UPGRADE



R8 ONE 2in1 Smart



NOHA Invisible



* STOPPER UPGRADE



Windproof Stopper



Falling Threshold



*Hardware have been Installed and debugged before delivery.